



FRESNO



SERIES 3600 SWING CHECK VALVE

TECHNICAL DATA SHEET



Model 36A

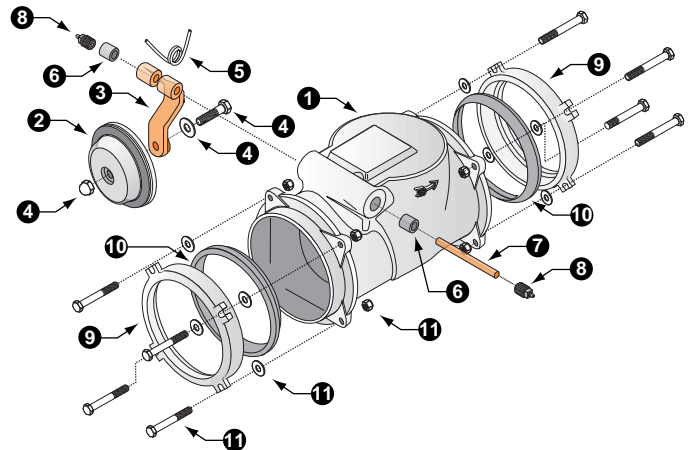
Series 3600 Swing Check Valve

Features

- Cast Aluminum body combines lightweight strength and corrosion resistance.
- Resilient seal ensures positive leak-resistant seal.
- Compression coupling style mounting for ease of installation.
- Brass hinge pin with nylon bushings and Stainless Steel spring ensures lasting performance.
- Swing arm design guarantees unrestricted full flow.
- Precision machined seat creates accurate closure.

Material Specifications

Item	Description	Material	Specification
1	Body	Cast Aluminum	ASTM B179-65, Alloy SC70A
2	Cover	Cast Aluminum	ASTM B179-65, Alloy SC70A
3	Arm	Bronze	ASTM B147 (7A)
4	Cover Bolt & Nut	Steel, Plated	ASTM A307 & A164
5	Spring	Steel	ASTM A231
6	Bushings	Nylatron	Fab. Spec. No. LP410A
7	Hinge Pin	Brass	ASTM B16
8	Lubrication Plug	Steel, Plated	ASTM A307 & A164
9	Coupler Rings	Cast Aluminum	ASTM B179-65, Alloy SC70A
10	Coupler Gaskets	Buna-N	ASTM D2000, BC610/625
11	Cplr., Bolts, Nuts, Wshrs.	Steel, Plated	ASTM A307 & A164

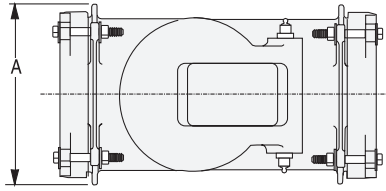


Applications

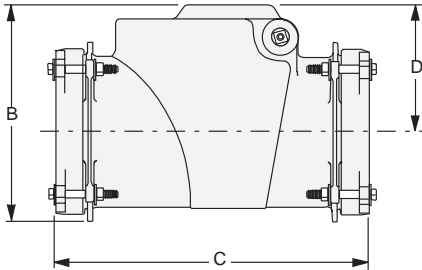
The Series 3600 Swing Check Valve is designed to prevent backflow in irrigation and water control lines.

SPECIFICATIONS

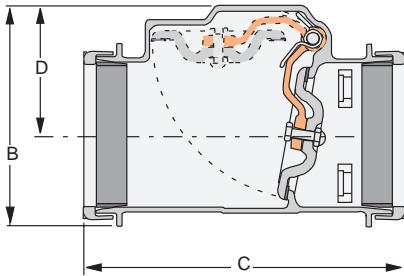
SERIES 3600 SWING CHECK VALVE



Top View



Side Views



Pressure Rating

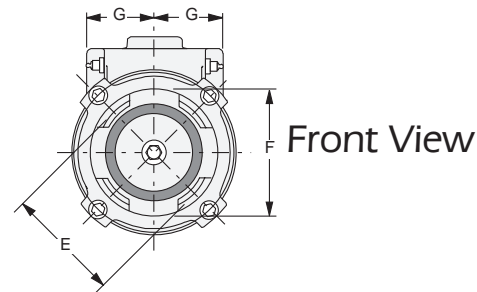
4"	120 psi
6"	120 psi
8"	100 psi
10"	80 psi

Installation

The Series 3600 Swing Check Valve is normally installed using the compression couplings on either end of the valve. The pipe slips into the valve and the compression coupling bolts are then tightened evenly to compress the seal around the pipe.

Options

- Available for use with IPS pipe (Model 36A) or use with O.D. pipe (Model 36B).



Dimensional Information

Valve Size	Model Number	Weight (lbs.)	Dimensions (Inches)						
			A	B	C	D	E	F	G
4"	36A	14.0	7.25	8.25	13.75	5.00	4.25	4.61	2.81
	36B	14.0	7.25	8.25	14.00	5.00	4.25	4.09	2.81
6"	36A	22.0	9.50	10.50	15.75	6.25	6.12	6.72	3.75
	36B	20.0	9.50	10.50	16.00	6.25	6.12	6.09	3.75
8"	36A	34.0	10.62	12.62	18.00	7.38	8.88	8.75	4.94
	36B	32.0	10.62	12.62	18.25	7.38	8.88	8.06	4.94
10"	36A	46.0	13.50	15.75	20.50	9.00	10.25	10.82	5.85
	36B	44.0	12.75	15.75	20.75	9.25	10.25	10.14	6.00



Fresno Valves & Castings, Inc.

7736 East Springfield Avenue
P.O. Box 40, Selma, CA 93662, U.S.A.

(800) 333-1658

www.fresnovalves.com